

**Gentry County**  
**78 +/- Total Acres**  
**\$1825 / Acre**



**List Price:** \$142,350

**Legal Description:**

TWN64N RNG31W SEC 5

**Location:** This 78 Acres is located on HWY 169, Grant City Missouri in Gentry County. Excellent location.



**Land:** Rolling hill land with nice stand of timber and pond. Farm offers blacktop frontage with several entrances for year round accessibility. CRP income helps to pay the way for excellent recreation including fishing, Deer and Turkey hunting and much more.



**Est. Taxes:** \$126.29 (\$1.62 an acre)

**Est. Income:** \$2807 Annually (48.4 acres CRP times \$58 per acre)



**Enterprise Realty**  
121 E. 4th St.  
Maryville, MO 64468  
Office: (660) 582-7160  
[Http://www.entrealty.com](http://www.entrealty.com)



**Enterprise Realty**  
A JAMES COMPANY

**& AUCTIONS**

*Selling the five state Area  
yard by yard - acre by acre !!*

Fax 660-582-7162

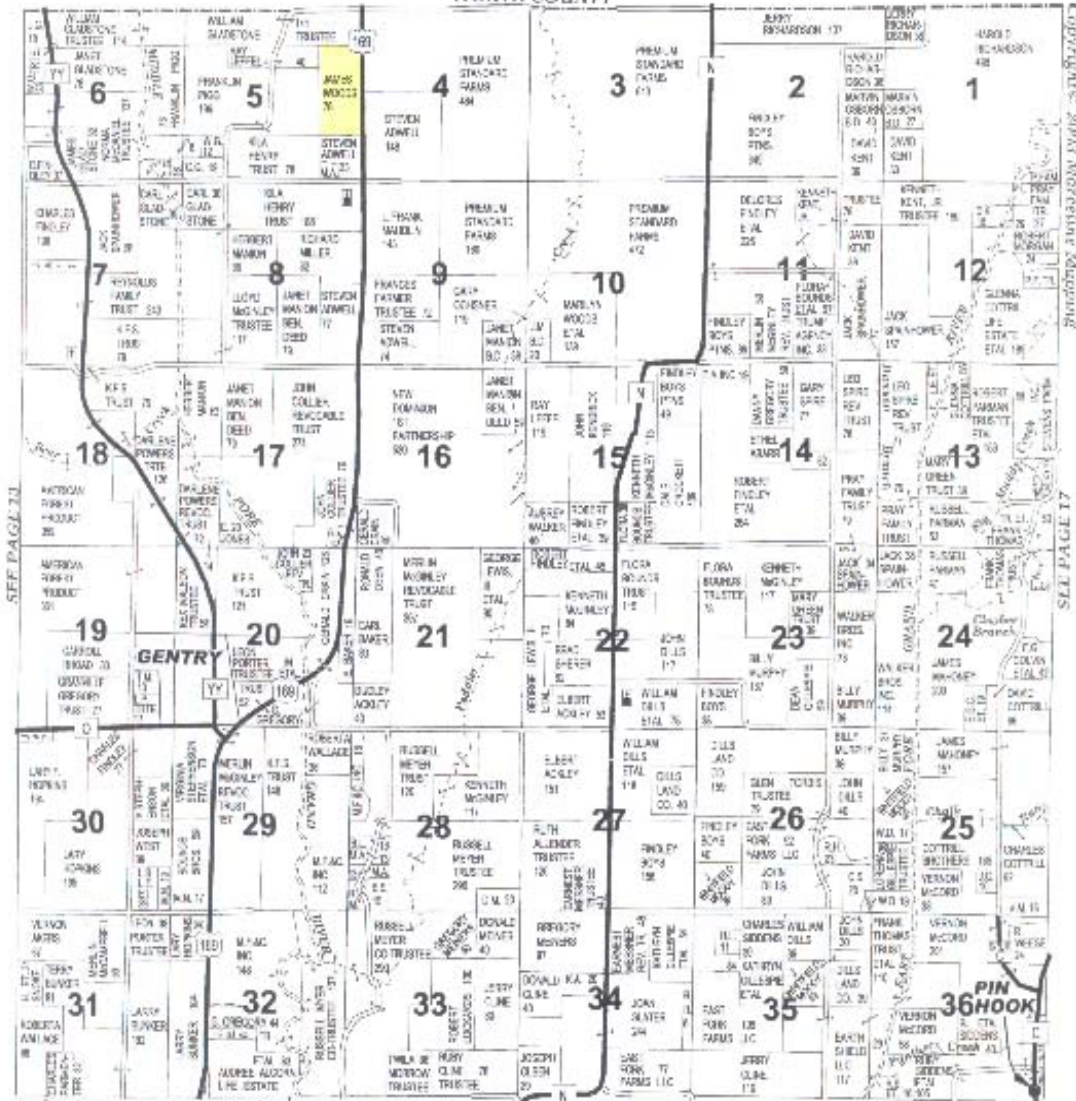
Phone 660-582-7160

**TOWNSHIP 64N • RANGE 31W**

WEST CENTRAL PART BOGLE PT

SOUTHWEST PART HOWARD PT

WORTH COUNTY



Copyright © 2003 Marcelline Mapping

SEE PAGE 21

15

# Aerial Map



map center: 40° 22' 46.59", 94° 24' 51.12"  
scale: 10397

**5-64N-31W**  
**Gentry County**  
**Missouri**



6/9/2009

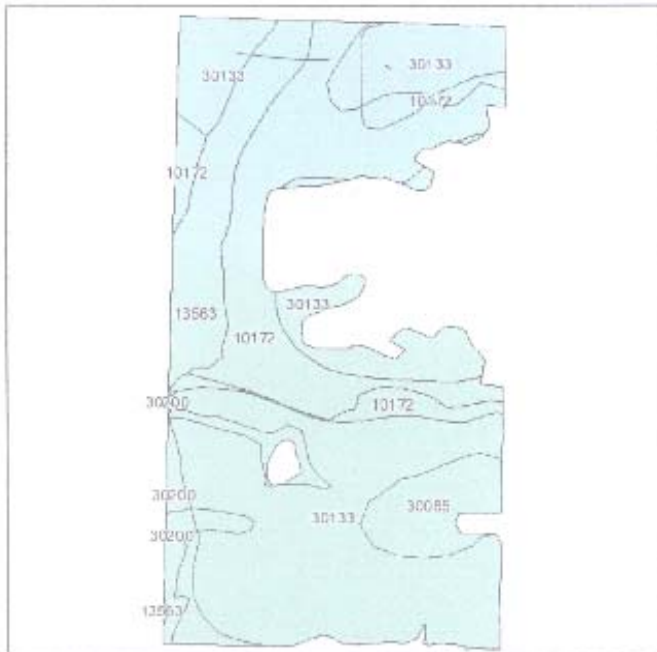
Maps provided by:



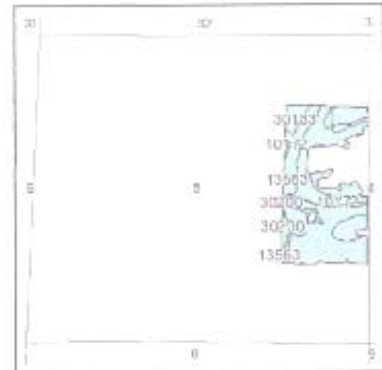
©AgriData, Inc. 2009  
www.AgrData.com

Field borders provided by Farm Service Agency as of 5/23/2008. Aerial photography provided by Aerial Photography Field Office.

## Soils Map



Fsa borders provided by the Farm Service Agency as of May 23, 2006.  
Soils data provided by USDA and NRCS.



State: **Missouri**  
 County: **Gentry**  
 Location: **005-064N-031W**  
 Township: **Bogle**  
 Acres: **64.3**



Maps provided by:



Code	Soil Description	Acres	Percent of field	Non-ir Class
30133	Lamoni clay loam, 5 to 8 percent slopes, eroded	34.6	53.9%	IIIc
10172	Shelby clay loam, 9 to 14 percent slopes, eroded	19.9	26.3%	IVe
13563	Nodaway silt loam, 0 to 2 percent slopes, occasionally flooded	6.6	10.3%	IIv
30085	Grundy silt loam, 2 to 5 percent slopes	3.8	5.9%	IIIa
30200	Shelby loam, 9 to 14 percent slopes	2.4	3.7%	IVe
<b>Weighted Average</b>				