

Livingston County
330 +/- Total Acres
\$2455 / Acre



List Price: \$810,000

Legal Description: TWN59N RNG24W
SEC 36

Location: This 330Acres is located on
HWY 65 just North of Chillicothe in
Livingston County.

**Excellent location with blacktop
frontage.**

Land: Gently rolling row crop

Est. Taxes: \$1074.78

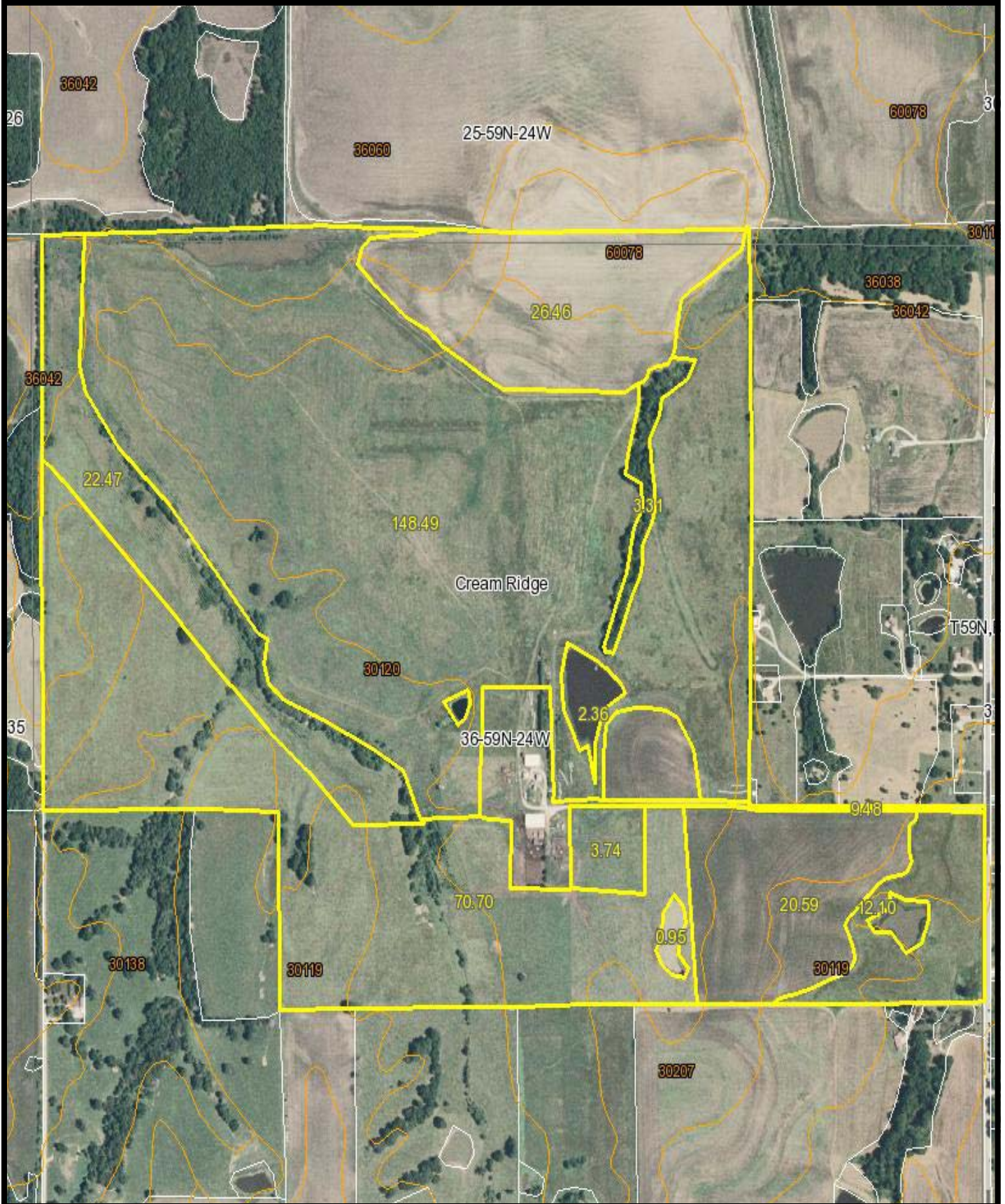
CRP Expires: 2015

Est. Income:

264.1 ac x \$175 (cash rent) = \$46,217.50
22.5 ac x \$85.84 (CRP) = \$1931.00
\$48,148.50



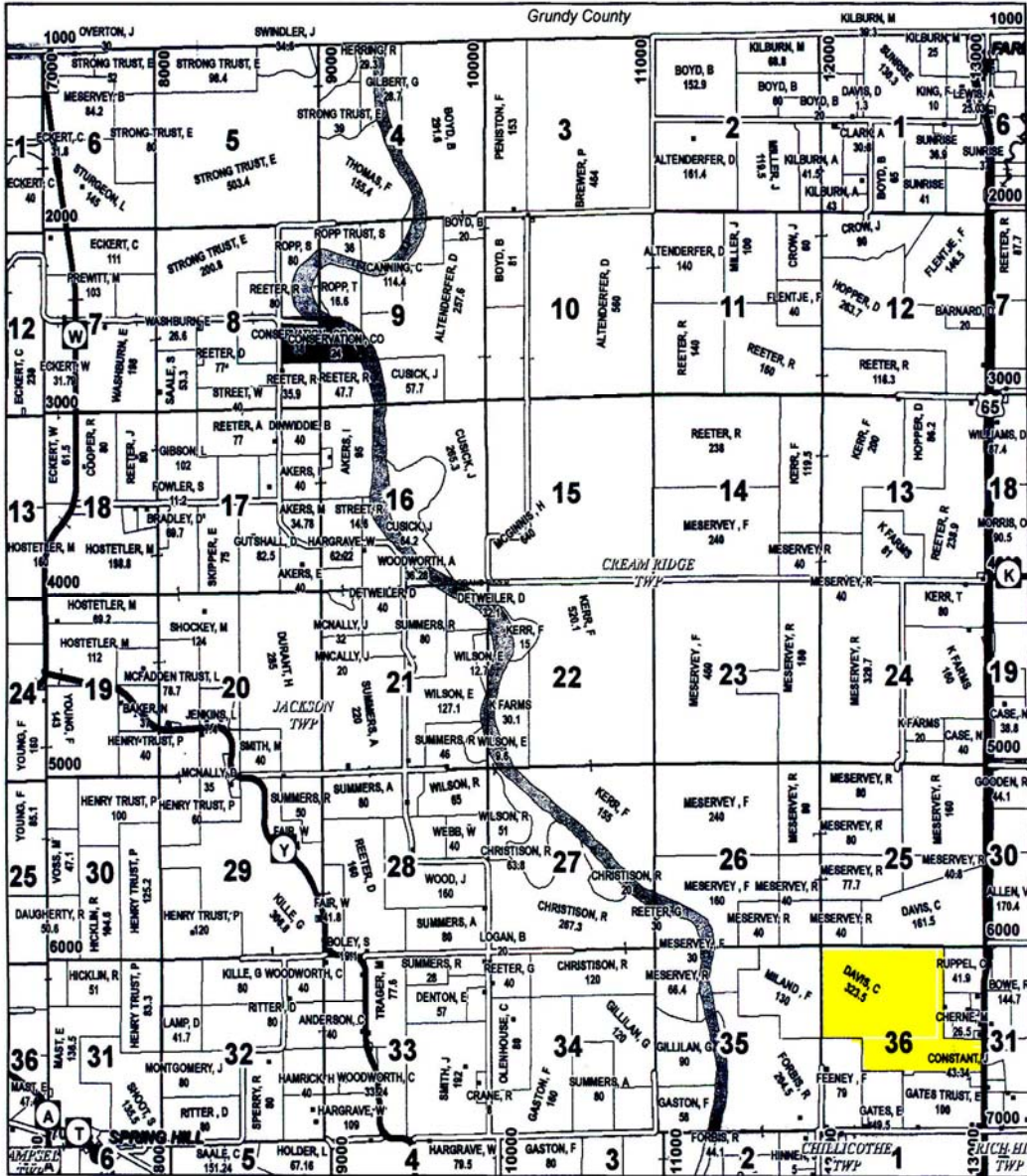
Enterprise Realty
121 E. 4th St.
Maryville, MO 64468
Office: (660) 582-7160
[Http://www.entrealty.com](http://www.entrealty.com)



TOWNSHIP 59N - RANGE 24W

Northeast Part JACKSON TWP

West Part CREAM RIDGE TWP



See Page 9

See Page 13

See Page 19

Map Date: April 16, 2009

This data was primarily developed for tax purposes and is not considered survey accurate.

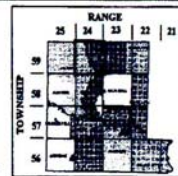
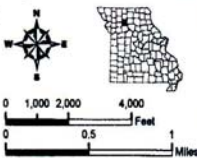
Livingston County Commission
 Eva Danner - Presiding Commissioner
 Ken Lawhoff - Associate Commissioner
 Todd Rodenberg - Associate Commissioner

Most parcels > 5 ac labeled

GIS & Map Development By:

Data Courtesy Livingston County
 Geographic Information System
 Steve Ripley - Assessor / GIS Manager

MIDLAND GIS Solutions
 800 882-0000
 501 W. Market
 Maryville, MO 64405
 www.midlandgis.com



Legend	
	County Boundary
	City Limits
	Township Range
	Section
	Political Township
	Land Ownership
	Water
	Woodlands
	US Highways
	RT Highways
	CO Highways
	Stream
	Fed Roads
	Stream
	Land Hoist
	Bridges
	Cornerstone